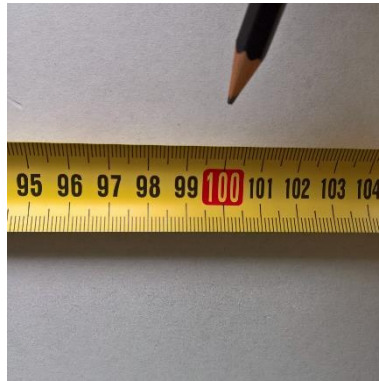




LightBeton®
Pur+
Adherence guide



Ensure that the surface is flat, clean, dry, sound and free from contaminating material like dust, grease or similar.



Mark the first cross joint in width and/or height.



Level the joints in the whole vertical and horizontal direction to ensure a correct arrangement of the panels.



Spread the adhesive onto the wall with a notched trowel (i.e. 2.3 x 2 mm notches at 5 mm on center, check the supplier's datasheet).



Only apply adhesive for at most 20 minutes to avoid a hardening of the adhesive before placement of the panels.



Place the first panel according to the marked cross joints by slightly twisting into the adhesive and thereby ensure a good overall contact. Based in correct position, press the panel firmly into the adhesive.



Avoid higher amounts of adhesive material in the panel joint area to prevent a penetration of adhesive through the joints. Also avoid spreading adhesive to the panels surface while completing the wall arrangement. Adhesive needs to be removed before curing by using a clean cloth and rubbing alcohol.



Complete the wall arrangement from bottom left to top right. Do always check if the panel joints are set straight and proper to the planned arrangement. After placement of the last panel, press all panels firmly to the wall once again to guarantee a full adhesive contact.

Our application of technical recommendations in written and spoken that we used to support the buyer/processor based on our experience, according to the current state of knowledge in science and practice, are not binding and shall not establish a legally valid contractual relationship, and no addition to obligations under the purchase contract. You do not absolve the buyer from our products for their suitability for their suitability for the intended purpose to examine themselves.