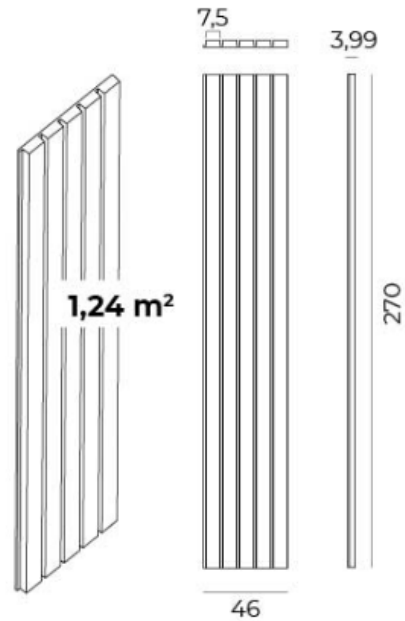
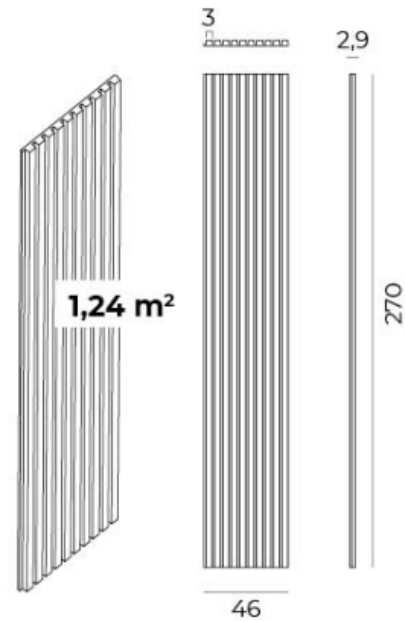


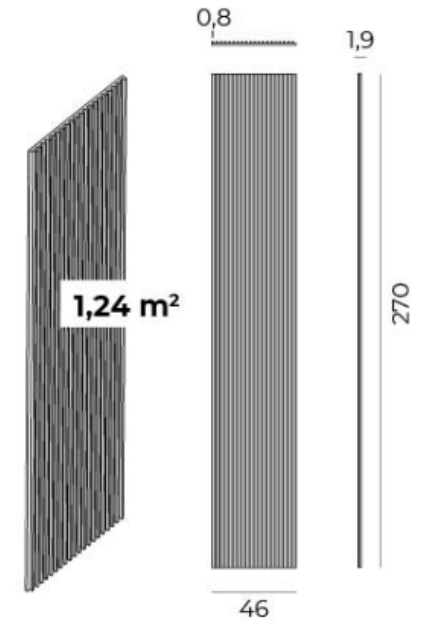
### MILO-1 PR723 / MILO-1 LX723



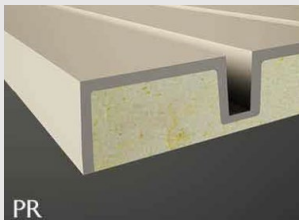
### MILO-2 PR724 / MILO-2 LX724



### MILO-3 PR725 / MILO-3 LX725



#### Forms

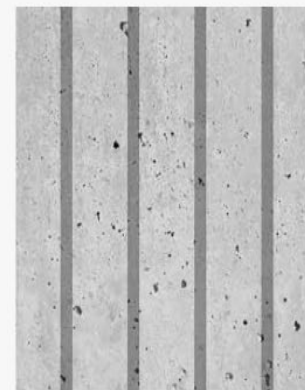


**Stone and Polyurethane**  
Panel composed of 4mm of crushed stone and a high density polyurethane closed cell foam.



**EcoLuxer**  
Panel composed of 16 types of stone minerals and resin.

#### Textura / Texture



IMITACIÓN CEMENTO  
IMITATION CONCRETE